

TABLE OF CONTENTS

SPARE PART	PAGE
BEARINGS (ISO9002 CERTIFIED)	2
COMMUTATOR CLEANING CHALK	3
COMMUTATOR STONE	3,4
LEADS, CABLE SLEEVES	4
PLUGS and SOCKETS	4
CHUCKS AND KEYS	4
WASHING MACHINE BRUSHES	5
MOTORS	6
MOTOR DIMENSION DIAGRAM	6
VAC MOTOR LISTING & SPECIFICATION TABLE	7
MOTORS (COMPRESSOR)	8
MOTORS (DRILL PRESS)	8
VACUUM CLEANER BRUSH HOLDERS	8
SWITCHES	8,9

*ALL PRICES ARE QUOTED EX-GST PER PIECE
PLEASE QUOTE SCHUNK PART No. WHEN ORDERING*



BEARINGS

BEARING NUMBER	SIZE	SCHUNK PT #	PRICE
6000 2RS		31-22-6000	\$2.15
6001 2RS		31-22-6001	\$2.40
6002 2RS		31-22-6002	\$2.65
6003 2RS		31-22-6003	\$3.85
6004 2RS		31-22-6004	\$4.55
6005 2RS		31-22-6005	\$4.95
6006 2RS		31-22-6006	\$5.75
6008 2RS		31-22-6008	\$12.50
606 2RS		31-22-606	\$2.80
607 2RS		31-22-607	\$2.90
608 2RS		31-22-608	\$2.15
609 2RS		31-22-609	\$2.55
6200 2RS		31-22-6200	\$2.15
6201 2RS		31-22-6201	\$2.30
6202 2RS		31-22-6202	\$2.50
6203 2RS		31-22-6203	\$2.70
6204 2RS		31-22-6204	\$3.60
6205 2RS		31-22-6205	\$4.80
6206 2RS		31-22-6206	\$7.45
6207 2RS		31-22-6207	\$9.00
6208 2RS		31-22-6208	\$11.40
6209 2RS		31-22-6209	\$14.05
6210 2RS		31-22-6210	\$16.80
625 2RS		31-22-625	\$3.25
626 2RS		31-22-626	\$2.30
627 2RS		31-22-627	\$2.30
628 2RS		31-22-628	\$2.55
629 2RS		31-22-629	\$2.30
6300 2RS		31-22-6300	\$3.40
63001 wide series		31-22-63001	\$10.20
6301 2RS		31-22-6301	\$3.40
6302 2RS		31-22-6302	\$3.85
6303 2RS		31-22-6303	\$5.35
6304 2RS		31-22-6304	\$5.70
6305 2RS		31-22-6305	\$6.75
6306 2RS		31-22-6306	\$10.20
6307 2RS		31-22-6307	\$13.20
6308 2RS		31-22-6308	\$18.50
6309 2RS		31-22-6309	\$22.90
6804 2RS		31-22-6804	\$11.30
686 2RS		31-22-686	\$2.65
6902 2RS		31-22-6902	\$6.00
696 2RS		31-22-696	\$2.40



COMMUTATOR CLEANING CHALK

SIZE	SCHUNK PT #	PRICE
200mm x 75mm x 50mm (3" x 2")	38-CC-001	\$344.40
200mm X 50mm X 25mm (2" x 1")	38-CC-002	\$115.00
200mm X 25mm X 12mm (1" x 1/2")	38-CC-003	\$24.40
200mm X 12mm X 12mm (1/2" x 1/2")	38-CC-004	\$12.25
100mm X 25mm X 12mm (1" x 1/2")	38-CC-005	\$12.25
100mm X 12mm X 12mm (suits 1/2" x 1/2")	38-CC-006	\$6.20
100mm X 12mm X 9mm (suits 1/2" x 3/8")	38-CC-007	\$5.50
100mm X 9mm X 6mm (suits 3/8" x 1/4")	38-CC-008	\$4.65
100mm X 6mm X 6mm (suits 1/4" x 1/4")	38-CC-009	\$3.40
100mm X 12mm X 6mm (suits 1/2" x 1/4")	38-CC-010	\$5.25
100mm X 9mm X 9mm (suits 3/8" x 3/8")	38-CC-011	\$5.05
200mm X 20mm X 20mm	38-CC-012	\$31.50
200mm X 15mm X 15mm	38-CC-013	\$27.85

COMMUTATOR STONE

SIZE and TYPE	SCHUNK PT #	PRICE
Fine Grinding Stone		
6mm x 6mm x 100mm	38-CS-001	\$7.35
6mm x 9mm x 100mm	38-CS-002	\$8.40
6mm x 12mm x 100mm	38-CS-003	\$11.55
12mm x 12mm x 100mm	38-CS-004	\$13.65
60mm x 60mm x 125mm	38-CS-0003	\$61.95
with handle, 50mm x 50mm x 50mm	38-CS-020	\$94.50
Medium Grinding Stone		
6mm x 6mm x 100mm	38-CS-009	\$7.35
6mm x 9mm x 100mm	38-CS-008	\$8.40
6mm x 12mm x 100mm	38-CS-007	\$11.55
12mm x 12mm x 100mm	38-CS-006	\$13.65
60mm x 60mm x 125mm	38-CS-0001	\$61.95
with handle, 50mm x 50mm x 50mm	38-CS-030	\$94.50
Coarse Grinding Stone		
6mm x 6mm x 100mm	38-CS-010	\$7.35
6mm x 9mm x 100mm	38-CS-011	\$8.40
6mm x 12mm x 100mm	38-CS-012	\$11.55
12mm x 12mm x 100mm	38-CS-013	\$13.65
60mm x 60mm x 125mm	38-CS-0002	\$61.95
with handle, 50mm x 50mm x 50mm	38-CS-040	\$94.50

CONT.

COMMUTATOR CLEANING STONE CONT.

Spare Parts for Power Tools and Home Appliances



SIZE and TYPE	SCHUNK PT #	PRICE
Rubber Bonded Grinding Stone		
100mm x 25mm x 125mm	38-RUB-001	\$142.00
50mm x 25mm x 125mm	38-RUB-002	\$71.00
25mm x 25mm x 125mm	38-RUB-003	\$35.00
25mm x 12mm x 125mm	38-RUB-004	\$17.55
12mm x 12mm x 125mm	38-RUB-005	\$12.60
9mm x 9mm x 125mm	38-RUB-006	\$9.45
6mm x 6mm x 125mm	38-RUB-007	\$6.30

LEADS AND SLEEVES

LEADS	SCHUNK PT #	PRICE
2 Core, 10 Amp, Grey 3 metre, clear plug (QTY 50 MIN)	34-16-B4222	\$3.05
2 Core, 10 Amp, Grey 3 metre, clear plug (QTY 1-49)	34-16-B4222	\$3.80
2 Core, 10 Amp, Orange 3 metre, clear plug	34-16-B4224	\$3.80
3 Core, 10 Amp, Grey 3 metre, clear Plug	34-16-B6649	\$4.10
3 Core, 15 Amp, Orange 3 metre, 10 Amp clear plug	34-16-B6651	\$4.10
3 Core, 15 Amp, Grey 3 metre, 10 Amp clear plug	34-16-EXR3007G	\$6.90
3 Core, 15 Amp Orange 3 metre, 10 Amp clear plug	34-16-EXR3007O	\$6.90
3 Core, 15 Amp, Orange 3 metre, 15 Amp clear plug	34-16-B6656	\$6.90
CABLE SLEEVES		
Cable Sleeves Large 85mm length (ID = 10mm)	34-81-085	\$1.85
Cable Sleeves Small 65mm length (ID = 9.2mm)	34-82-065	\$1.50

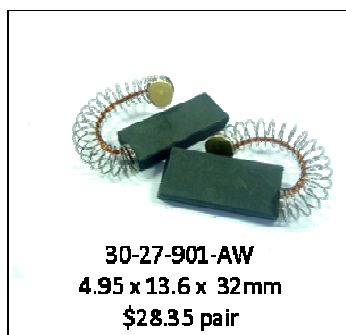
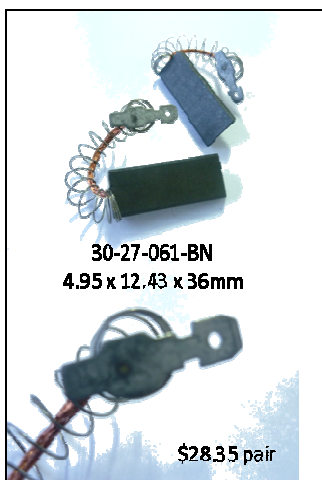
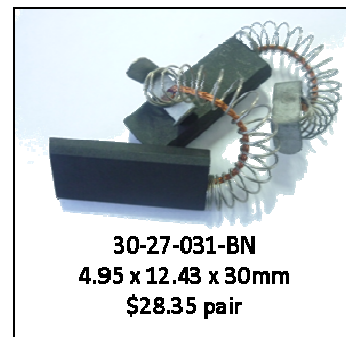
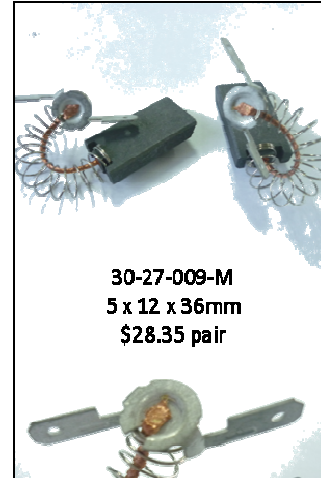
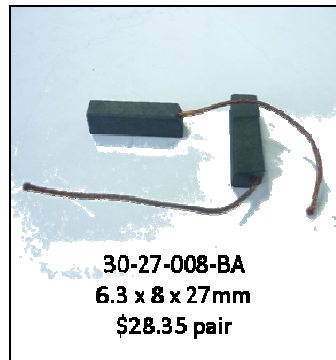
PLUGS / SOCKETS

AMP MALE / FEMALE	SCHUNK PT #	PRICE
10 amp 3 pin male plug	35-25-001	\$2.40
15 amp 3 pin male plug	35-25-002	\$3.20
10 amp 3 pin female socket	35-25-003	\$2.90
15 amp 3 pin female socket	35-25-004	\$3.80

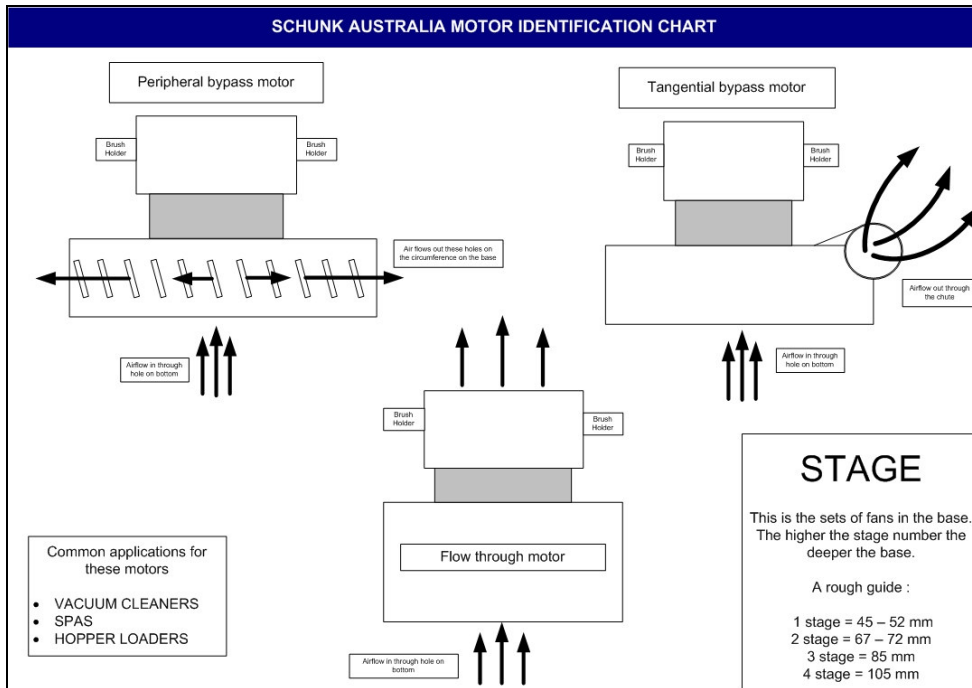
CHUCKS & KEYS

SIZE - KEYED / KEYLESS	SCHUNK PT #	PRICE
13mm Key	37-B11	\$2.95
10mm Key	37-B26	\$2.10
10mm X 3/8" X 24 UNF Keyed Chuck – J3510C	37-KA-C10B	\$12.60

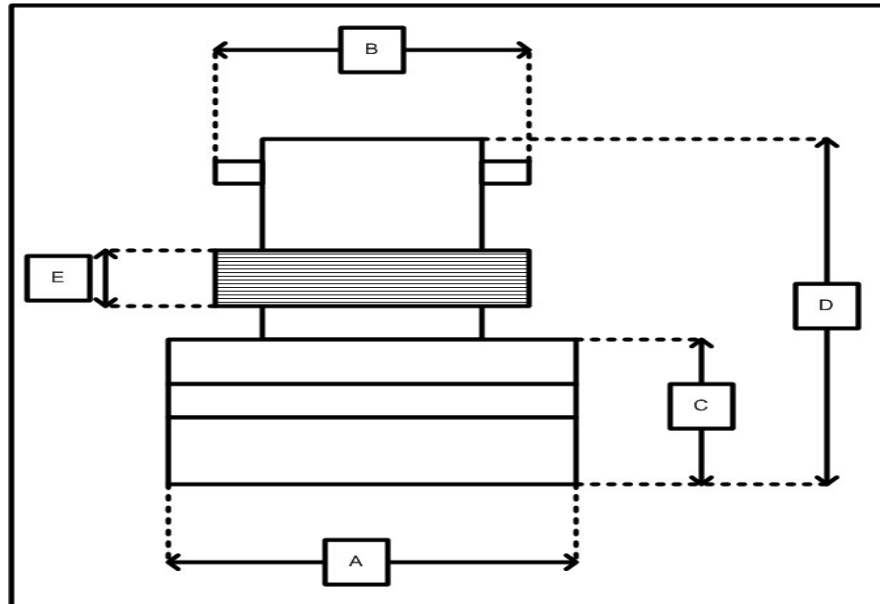
WASHING MACHINE BRUSHES



VAC MOTOR IDENTIFICATION



VAC MOTOR MEASUREMENTS (mm.)



After determining the type and A to E measurements, use the following tables to find the motor you require.

MOTORS

Spare Parts for Power Tools and Home Appliances



Motors to Suit Vacuum Cleaners, Spa Blowers, Hopper Loader & Industrial Suction / Blower Motors

For Festo, Stihl, Makita, Wap Industrial, Dust Extractor Units, Lamb / Ametek (Chinese and American)

PERIPHERAL BYPASS MOTORS

A	B	C	D	E	Watts	Stage	Schunk #	Price
123					750	2	32-4-74304	\$210.00
143	107	66	166	30	1000	2	32-4-V9631	\$94.00
143	116	67	175	38	1300	2	32-4-V9630	\$105.25
143	120	69	170	38	1100	2	32-4-74080	\$99.75
144	121	49	133	21	750	1	32-4-74103	\$127.50
145	122	69	170	38	1100	2	32-4-7610148	\$99.00
145	N/A	68.6	160	35	850	2	32-4-74125	\$153.60
145	122	72	176	39	1300	2	32-4-74778	\$124.80
145	123	73	169	32	1000	2	32-4-74006	\$86.10
148	118	49	139	25	800	1	32-4-V6484	\$92.00
183	136	64	155.5	n/a		2	32-4-115519	\$343.55

TANGENTIAL BYPASS MOTORS

A	B	C	D	E	Watts	Stage	Schunk #	Price
144	115	77	176	37	1300	2	32-4-V9626	\$132.00
145	127	74	209	46	1300	3	32-4-74473	\$240.45
145	121	69	169	38	1100	2	32-4-7610143	\$131.25
145	121	69	169	36	1100	2	32-4-74074	\$170.10
183	137	64	155.5	n/a	1300	2	32-4-74101	\$305.55
183	135	77	198	n/a	1400	3	32-4-74102	\$340.20

FLOW THROUGH MOTORS

A	B	C	D	E	Watts	Stage	Schunk #	Price
					1600	1	32-4-Diablo	\$95
107	121	74.5	152	30	900	2	32-4-7610070	\$136.25
143	113	59	175	33	1300	2	32-4-V4544	\$99
145	122	60	150	26	750	2	32-4-74001	\$92.40
145	119	67	158	30	1000	2	32-4-V9664	\$92
145	125	60	172	33	1100	2	32-4-74003	\$97.20
145	121	72	157	n/a	1000	2	32-4-74343	\$142
145	123	72	149	30	1100	2	32-4-7610142	\$87.55
145	122	73	156	38	960	2	32-4-7610146	\$87.55
145	120	40	126	25	1000	1	32-4-V9632	\$132
147	121	45	113	21	1000	1	32-4-7610141	\$87.55

Motor purchases of quantity 10 or more will receive a discount of \$10 per motor.



COMPRESSOR MOTORS

MOTOR DETAILS	SCHUNK PT #	PRICE
Compressor Motor - 2850RPM, 1.65 KW. (18.7MM DIA. SHAFT)	32-18-165	\$218.55
Compressor Motor - 2850RPM, 2.20 KW, (18.7MM DIA. SHAFT)	32-18-220	\$242.55

DRILL PRESS MOTORS

MOTOR DETAILS	SCHUNK PT #	PRICE
Drill Press Motor - 1450RPM, 4 Pole, 1/4 HP / 250W	32-22-250	\$60.20
Drill Press Motor - 1450RPM, 4 Pole, 1/2 HP / 375W	32-22-375	\$110.45
Drill Press Motor - 1450RPM, 4 Pole, 3/4 HP / 550W	32-22-550	\$146.05
Drill Press Motor - 1450RPM, 4 Pole, 1 HP / 760W (16mm DIA. SHAFT)	32-22-760	\$167.30

VACUUM CLEANER BRUSH HOLDERS

HOLDER TO SUIT (COMPLETE WITH BRUSH)	SCHUNK PT #	PRICE
Holder complete w/ Brush - suit 7610158 (duplex)	30-37-801-H	\$38.85
Holder complete w/ Brush - suit 7610155	30-37-802-H	\$12.60
Holder complete w/ Brush - suit 7610156	30-37-803-H	\$12.60
Holder complete w/ Brush - suit 7620800	30-37-804-H	\$12.60
Holder complete w/ Brush - suit 7610157	30-37-806-H	\$12.60
Holder complete w/ Brush – 6.5 x 11.5mm	30-37-V6362	\$31.50

SWITCHES

TOGGLE SWITCHES	SCHUNK PT #	PRICE
10A, Single Pole Single Terminal On - Off - Black (11.8 OD)	33-9-A8	\$9.50
15A,12V / 3A, 240 V (11.67 OD)	33-9-201	\$3.75
15A, 240V 6 pin On / On (11.70 OD) Tab Terminals	33-9-T5-22A	\$16.50
15A, 250V On / Off / On Metal (11.4 OD Tab Terminals	33-9-T5-23A	\$12.50
15A, 250V On / Off / On Metal (11.4 OD) Screw Terminals	33-9-T5-23B	\$12.50
16A, Black toggle (11.5 OD)	33-9-875	\$10.25
20A, 250V/125V On / On (11.56 OD) Tab Terminals	33-9-T5-12A	\$16.50
20A, 250V/125V Double Pole (11.66 OD) Eaton / Floor Sander	33-9-7021C	\$25.20
20A, single pole, on/off, quick connect	33-9-7011C	\$15.50
20A, single pole, on/off/on, quick connect	33-9-7013C	\$16.50
20A, double pole, on/off, quick connect	33-9-7021C	\$25.50
20A, double pole, on/of/on, quick connect	33-9-7023C	\$28.50

CONT.

Spare Parts for Power Tools and Home Appliances

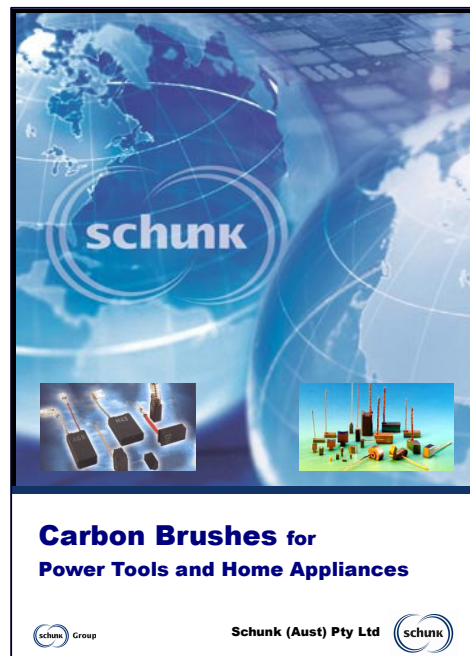


SWITCHES CONT.

TRIGGER SWITCHES	SCHUNK PT #	PRICE
Double Pole, no lock	33-9-PT2A1A11A	\$40.00
Double Pole, with lock	33-9-PT2A1A11B	\$45.00
SP26, cordless	33-9-SP26	\$9.50
ROCKER SWITCHES		
16A	33-9-S2	\$9.20
15A, 250V , single pole, on/on	33-9-A4	\$6.75
ACCESSORIES		
Switch Boot	33-9-101	\$4.75

PLEASE REFER TO OUR **CARBON BRUSH CATALOGUE** FOR A COMPLETE RANGE OF CARBON BRUSHES FOR:

- | | |
|-----------|------------------|
| AEG | KANGO |
| ATRA ACE | MAKITA |
| B&D | METABO |
| BALDOR | MILWAUKEE |
| BOSCH | PENTAGON |
| CLARKE | PORTER&CABLE |
| DEWALT | RAMSET |
| FEIN | RYOBI |
| FESTO | RUPES |
| FLEX | SCHEER |
| GMC | SKIL |
| HIRE TECH | WOLF |
| HILTI | VACUUM CLEANER |
| HITACHI | WASHING MACHINES |
| JEPSON | OTHER BRANDS |



CATALOGUE ALSO AVAILABLE ON-LINE AT www.schunk.com.au

INDUSTRIAL BRUSHES

For brushes made to your specifications for industrial, traction and mining applications contact us directly as below.